

Swivel feet plates stainless steel

Item description/product images



Description

Material:

Plates, stainless steel 1.4301.

Core, thermoplastic PA.

Rubber support TPE.

Version:

Plate bright.

Rubber support light grey with sealing lip, hardness 70 Shore A.

Temp. range -20°C to +100°C.

Note:

The rubber support is joined with the stainless steel plate and the PA core by injection moulding. The rubber support is resistant to oil and water (up to 60 °C). In addition, it is furnished with antibacterial and antimicrobial protection and is thus outstandingly suited for sectors in the food industry.

Swivel feet consist of a plate and a threaded spindle or ball joint. Any plate can be combined with any threaded spindle or ball joint.

For matching threaded spindles see K0421.

For matching ball joints see K0422.

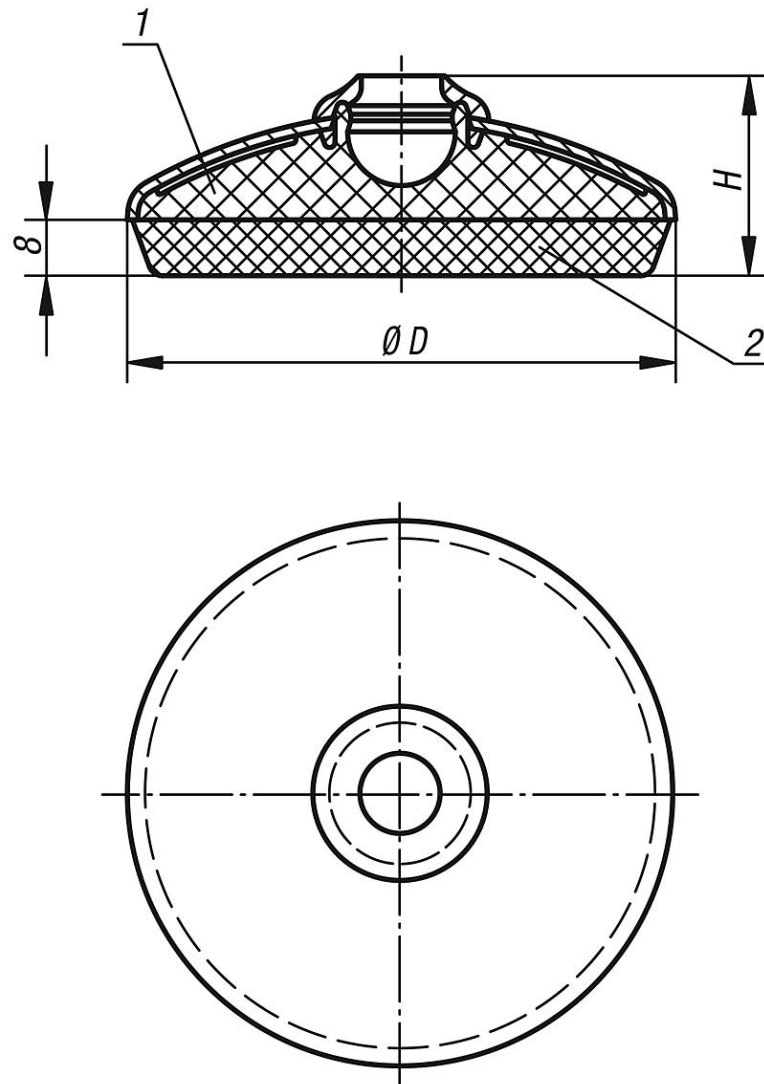
Drawing reference:

1) PA-core

2) rubber base

Swivel feet plates stainless steel

Drawings



Overview of items

Swivel feet plates, stainless steel

Order No.	D	H	Load rating max. kN
K0418.1060	58,5	29	7
K0418.1080	78,5	29	7
K0418.1100	98,5	29	7