

Levelling feet plates, plastic, Form E

Item description/product images



Description

Material:

Plates, thermoplastic, glass-fibre reinforced.

Version:

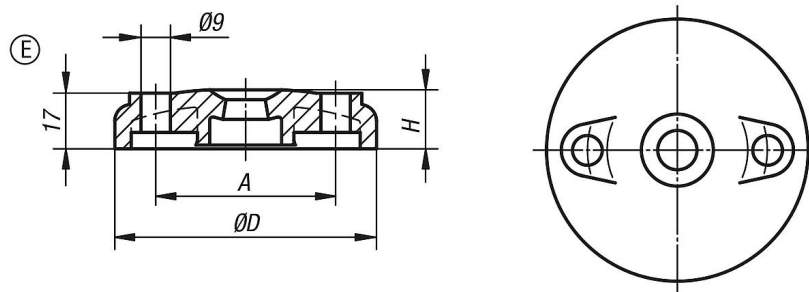
Black.

Note:

Levelling feet consist of a plate and a threaded spindle. Any plate can be combined with any threaded spindle.

For matching threaded spindles, see K0427.

Drawings



Overview of items

Order No.	Form	D	A	H	Load rating max. kN
K0423.5080	E	80	55	18	12
K0423.5100	E	100	74	18	12