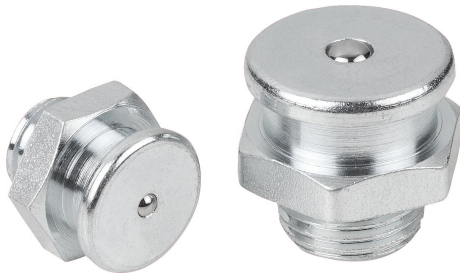


Grease nipples button head DIN 3404

Item description/product images



Description

Material:

Steel or 1.4305 stainless steel.

Version:

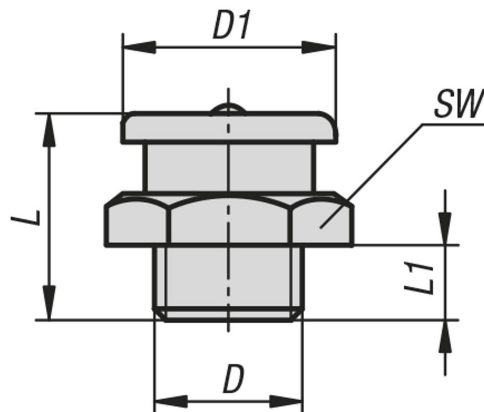
Steel electro zinc-plated.

Stainless steel bright.

Note:

As the construction of button head grease nipples allow for a high lubrication flow rate, they are especially useful for lubrication points which require a large grease volume. Because of the robust design, button head grease nipples are preferred for machines that are subjected to high external stress.

Drawings



Overview of items

Grease nipples button head DIN 3404

Order No.	Main material	D	D1	L	L1	SW
K1135.11006100	steel	M6x1	10	13,5	5,5	11
K1135.11008100	steel	M8x1	10	13,5	5,5	11
K1135.11010100	steel	M10x1	10	13,5	5,5	11
K1135.11018	steel	G1/8	10	15	6	11
K1135.11606100	steel	M6x1	16	17	6	17
K1135.11608100	steel	M8x1	16	17	7	17
K1135.11608125	steel	M8x1,25	16	17	6	17
K1135.11610100	steel	M10x1	16	17	6	17
K1135.11610150	steel	M10x1,5	16	17	6	17
K1135.11612150	steel	M12x1,5	16	17	6	17
K1135.11616150	steel	M16x1,5	16	18	7	17
K1135.11618	steel	G1/8	16	17	6	17
K1135.11614	steel	G1/4	16	17	6	17
K1135.21606100	stainless steel	M6x1	16	17	6,6	17
K1135.21608100	stainless steel	M8x1	16	17	7	17
K1135.21608125	stainless steel	M8x1,25	16	17	6	17
K1135.21610100	stainless steel	M10x1	16	17	6	17
K1135.21610150	stainless steel	M10x1,5	16	17	6	17
K1135.21612150	stainless steel	M12x1,5	16	17	6	17

Grease nipples button head DIN 3404

Overview of items

Order No.	Main material	D	D1	L	L1	SW
K1135.21618	stainless steel	G1/8	16	17	6	17
K1135.21614	stainless steel	G1/4	16	17	6	17
K1135.12216150	steel	M16x1,5	22	22	8	22
K1135.12214	steel	G1/4	22	22	8	22
K1135.12238	steel	G3/8	22	22	8	22
K1135.22216150	stainless steel	M16x1,5	22	22	8	22
K1135.22214	stainless steel	G1/4	22	21,5	8	22
K1135.22238	stainless steel	G3/8	22	23,5	8	22