

## Locating pin with internal thread, Form B, cylindrical

### Item description/product images

---



### Description

**Material:**  
Steel.

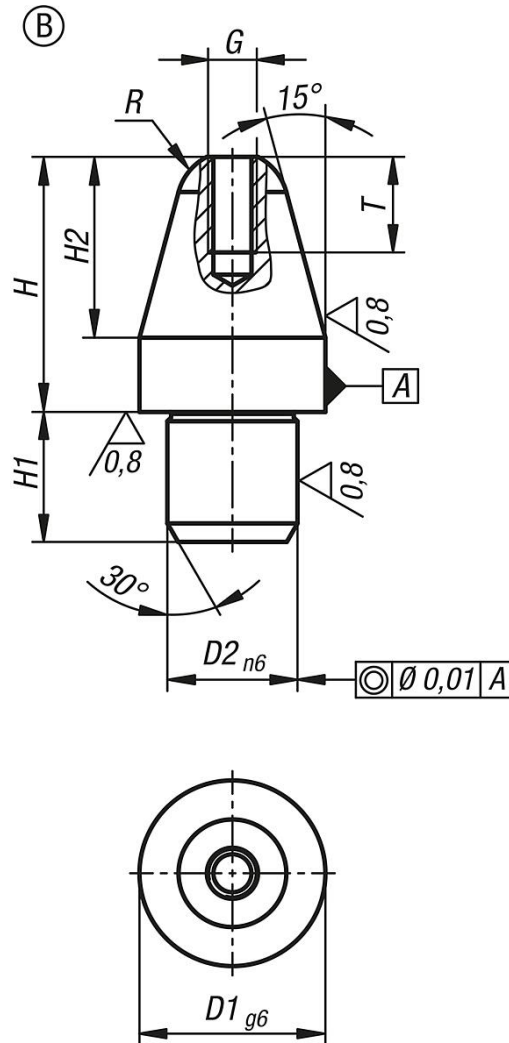
**Version:**  
Hardened and ground (HRC 60 ±2).

**Note:**  
The locating pins are designed to make the joining process easier. Used in combination with hardened locating bushes K1095, they enable exact, low-wear, and fast changes of the workpiece.

Versions D1 = 5 and D1 = 6 do not have an internal thread.

## Locating pin with internal thread, Form B, cylindrical

### Drawings



### Overview of items

Order No.	Form	Version 1	D1	D2	H	H1	H2	G	R	T
K1094.205	B	short	5	3	8	3	5	-	1,50	-
K1094.206	B	short	6	4	10	4	6	-	1,80	-
K1094.208	B	short	8	6	11,4	6	7,4	M2,5	2,5	5
K1094.210	B	short	10	7	13,7	7	9,7	M2,5	3	5
K1094.212	B	short	12	8	16	8	12	M3	3,5	6
K1094.216	B	short	16	12	20	12	15	M4	5	8
K1094.220	B	short	20	14	25,5	14	19,5	M5	6	10
K1094.305	B	long	5	3	10	3	5	-	1,50	-
K1094.306	B	long	6	4	12	4	6	-	1,80	-
K1094.308	B	long	8	6	17,4	6	7,4	M2,5	2,5	5
K1094.310	B	long	10	7	21,7	7	9,7	M2,5	3	5
K1094.312	B	long	12	8	24	8	12	M3	3,5	6
K1094.316	B	long	16	12	29	12	15	M4	5	8
K1094.320	B	long	20	14	35,5	14	19,5	M5	6	10

