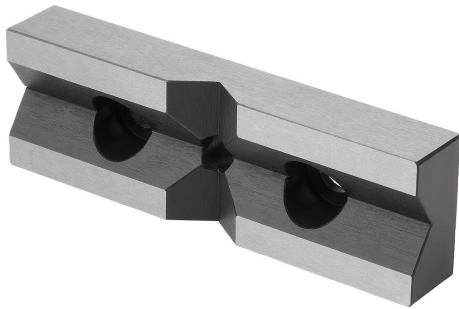


Prism jaw pads for centric vice, 65–80–125 mm

Item description/product images



Description

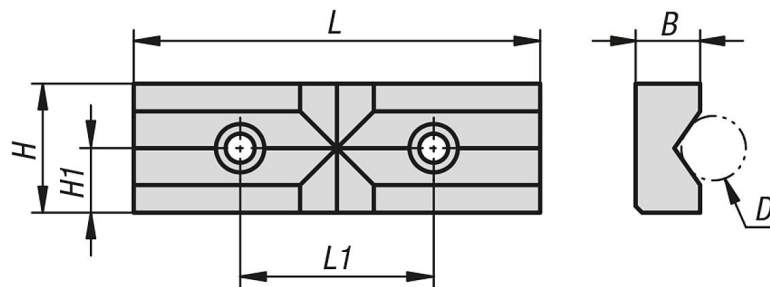
Material:
Steel.

Version:
Hardened.

Note:
Prism jaws are used for clamping round material, tubes, rods, profiles, etc. The prisms are machined in horizontally and vertically. The prism jaw pads are screwed onto the attachment jaws.

Suitable for K1236 and K1237

Drawings



Overview of items

Prism jaw pads for centric vice, 65–80–125 mm

Order No.	B	D	H	H1	L	L1
K1375.065	12,5	5-25	20	10	66	34
K1375.080	12,5	5-25	25	12,5	81	38
K1375.125	20	8-38	40	20	126	60