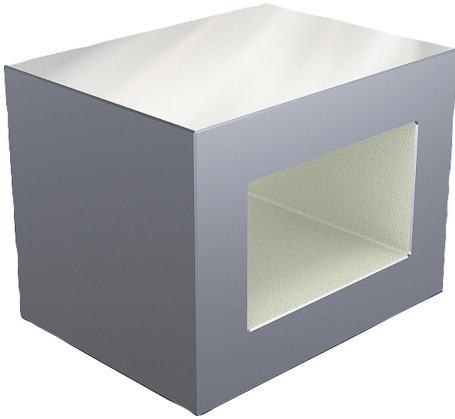


Tooling blocks, grey cast iron with pre-machined clamping faces

Item description/product images



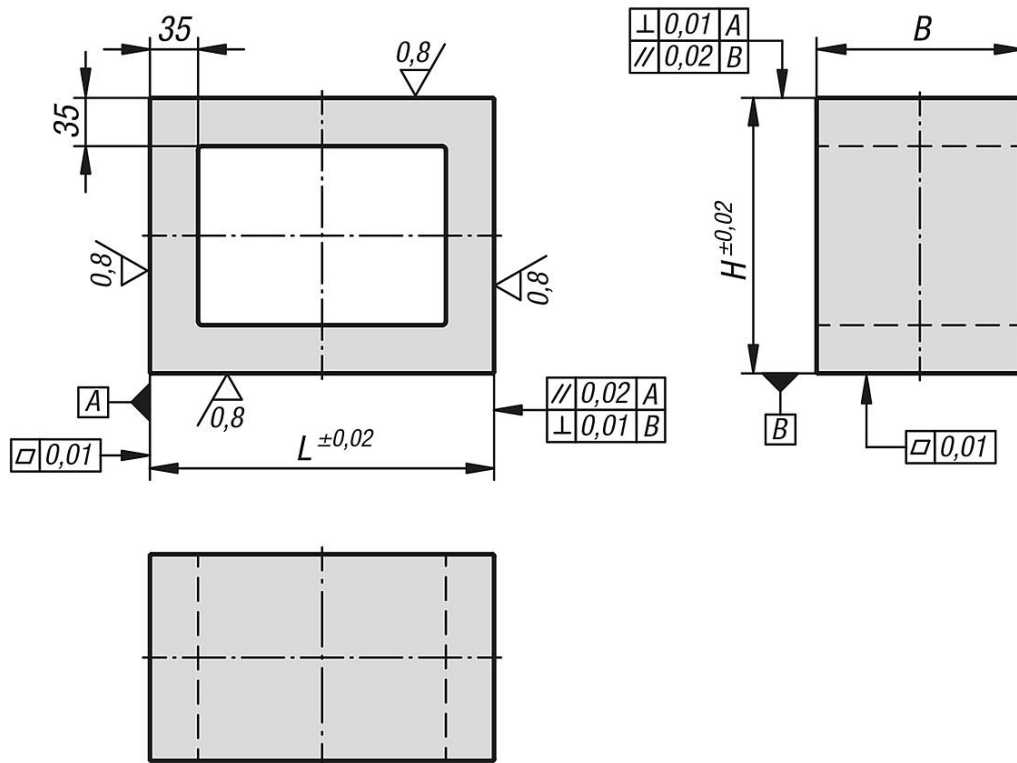
Description

Material:
GJL 300.

Version:
Support and mounting surfaces ground

Note:
Tooling blocks with pre-machined clamping faces are used for constructing fixtures. These tooling blocks provide a fast and economic way of producing elements with specific grid or individual holes. Tooling blocks can also be used as a base for clamping smaller workpieces.
By length $L=300$, the middle reinforcing rib should be taken into consideration.

Drawings



Overview of items

Tooling blocks, grey cast iron with pre-machined clamping faces

Order No.	L	B	H
K0809.100201515	200	150	150
K0809.100251520	250	150	200
K0809.100302025	300	200	250

