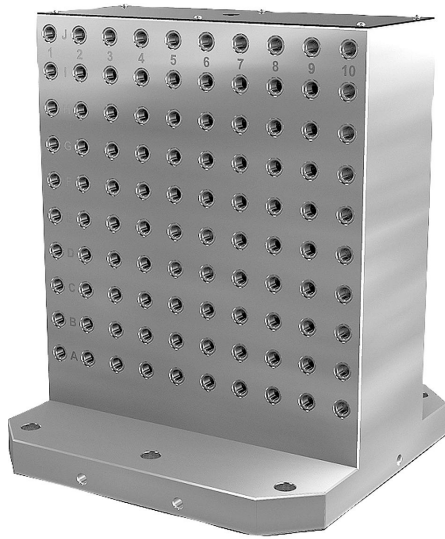


Tombstones, grey cast iron, double-sided, with grid holes

Item description/product images



Description

Material:

GJL 300.

Version:

Support and mounting surfaces precision machined

Note:

Grid spacing 50 ± 0.02 mm.

Tombstones with grid holes are used on horizontal machining centres.

The alphanumerically labelled grid holes guarantee a defined assignment of clamping elements by repeat setups.

The tombstones conform to machine tables for machine tools acc. to DIN 55201 and JIS 6337-1980.

Please order locating pins for positioning subplates on machine tables acc. to DIN 55201 separately.

Please order protection plugs to plug unused grid holes separately.

Ring bolts for hoisting are supplied.

Other dimensions available on request.

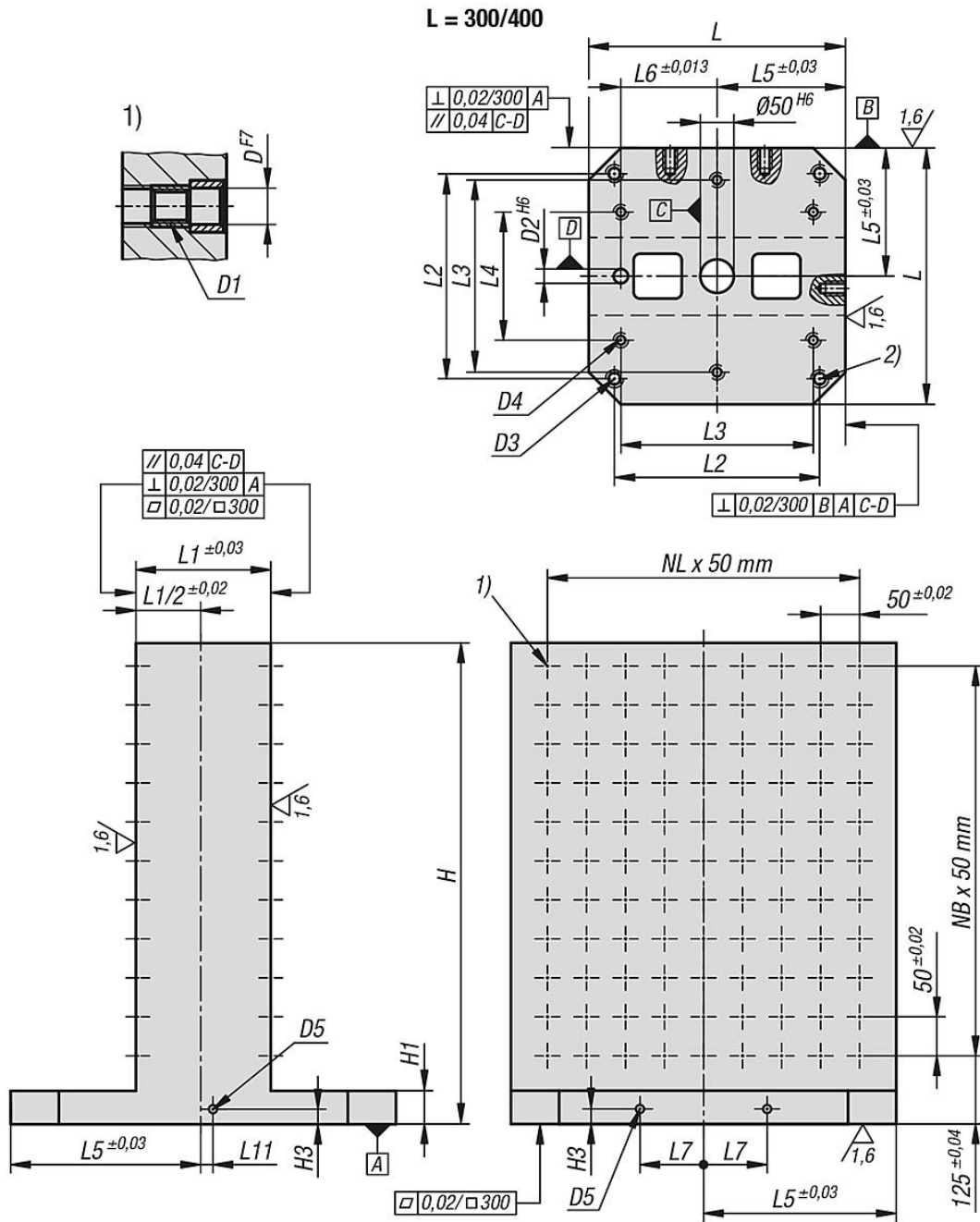
Drawing reference:

1) grid hole

2) hole for DIN 912 cap screw (D3/D4)

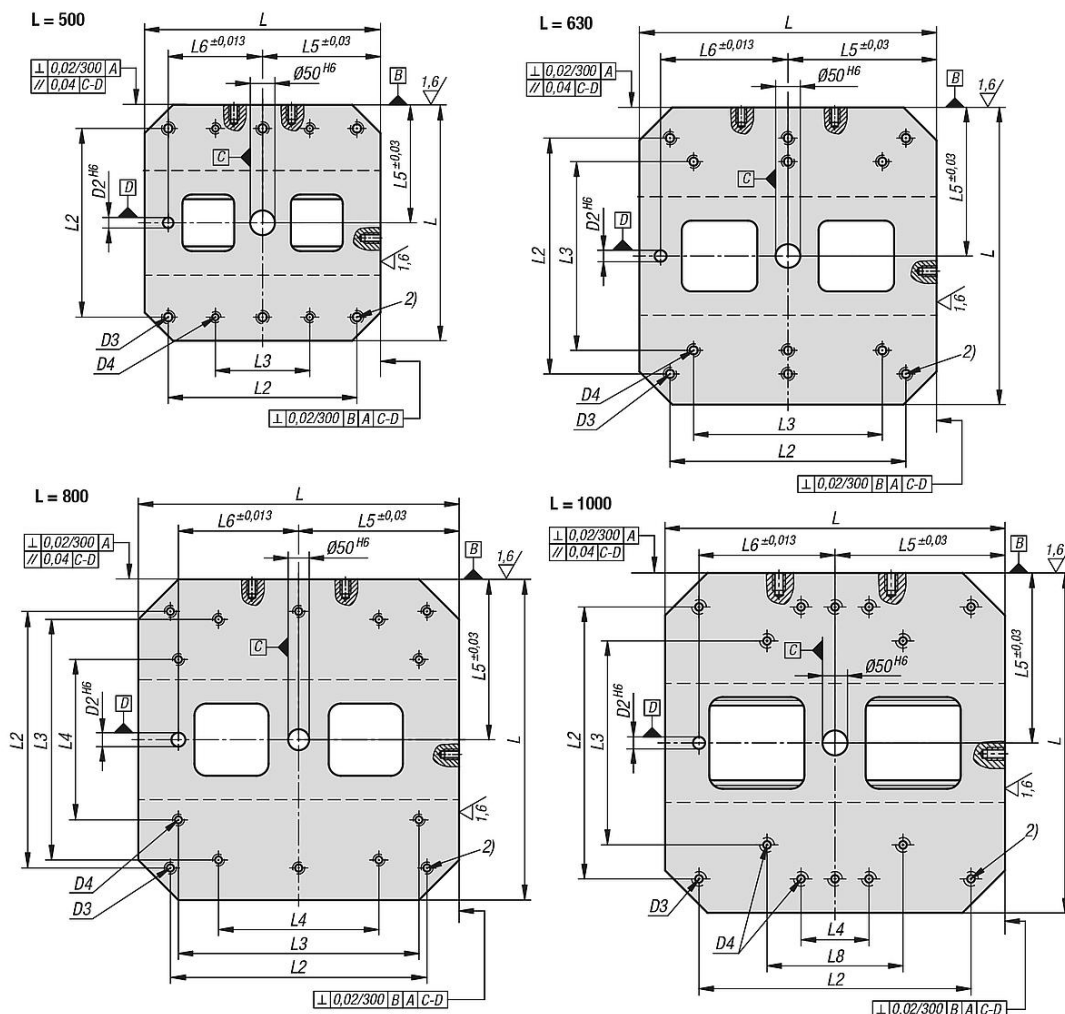
Tombstones, grey cast iron, double-sided, with grid holes

Drawings



Tombstones, grey cast iron, double-sided, with grid holes

Drawings



Overview of items

Tombstones, grey cast iron, double-sided, with grid holes

Order No.	L	H	H1	D	D1	D2	D3	D4	D5	H3	L1	L2	L3	L4	L5	L6	L7	L8	L11	No. of grid holes	NL=No. lengthwise	NB=No. across
K0803.212030050	300	500	50	12	M12	20	M12	M10	M12	15	80	250	200	-	150	100	40	-	0	96	5	7
K0803.212040050	400	500	50	12	M12	20	M16	M12	M16	18	150	320	300	200	200	150	55	-	25	128	7	7
K0803.212040065	400	650	50	12	M12	20	M16	M12	M16	18	150	320	300	200	200	150	55	-	25	176	7	10
K0803.212050060	500	600	50	12	M12	20	M16	M12	M16	18	200	400	200	-	250	200	75	-	25	200	9	9
K0803.212050075	500	750	50	12	M12	20	M16	M12	M16	18	200	400	200	-	250	200	75	-	25	260	9	12
K0803.212063070	630	700	50	12	M12	25	M16	M16	M16	18	250	500	400	-	315	200	100	-	25	288	11	11
K0803.212063085	630	850	50	12	M12	25	M16	M16	M16	18	250	500	400	-	315	200	100	-	25	360	11	14
K0803.212080080	800	800	50	12	M12	25	M16	M16	M16	18	300	640	600	400	400	300	135	-	25	420	14	13
K0803.212080100	800	1000	50	12	M12	25	M16	M16	M16	18	300	640	600	400	400	300	135	-	25	540	14	17
K0803.212100100	1000	1000	55	12	M12	25	M20	M20	M16	18	350	800	600	200	500	400	165	400	25	684	18	17
K0803.212100125	1000	1250	55	12	M12	25	M20	M20	M16	18	350	800	600	200	500	400	165	400	25	874	18	22
K0803.216030050	300	500	50	16	M16	20	M12	M10	M12	15	80	250	200	-	150	100	40	-	0	96	5	7
K0803.216040050	400	500	50	16	M16	20	M16	M12	M16	18	150	320	300	200	200	150	55	-	25	128	7	7
K0803.216040065	400	650	50	16	M16	20	M16	M12	M16	18	150	320	300	200	200	150	55	-	25	176	7	10
K0803.216050060	500	600	50	16	M16	20	M16	M12	M16	18	200	400	200	-	250	200	75	-	25	200	9	9
K0803.216050075	500	750	50	16	M16	20	M16	M12	M16	18	200	400	200	-	250	200	75	-	25	260	9	12
K0803.216063070	630	700	50	16	M16	25	M16	M16	M16	18	250	500	400	-	315	200	100	-	25	288	11	11
K0803.216063085	630	850	50	16	M16	25	M16	M16	M16	18	250	500	400	-	315	200	100	-	25	360	11	14
K0803.216080080	800	800	50	16	M16	25	M16	M16	M16	18	300	640	600	400	400	300	135	-	25	420	14	13

Tombstones, grey cast iron, double-sided, with grid holes

Overview of items

Order No.	L	H	H1	D	D1	D2	D3	D4	D5	H3	L1	L2	L3	L4	L5	L6	L7	L8	L11	No. of grid holes	NL=No. lengthwise	NB=No. across
K0803.216080100	800	1000	50	16	M16	25	M16	M16	M16	18	300	640	600	400	400	300	135	-	25	540	14	17
K0803.216100100	1000	1000	55	16	M16	25	M20	M20	M16	18	350	800	600	200	500	400	165	400	25	684	18	17
K0803.216100125	1000	1250	55	16	M16	25	M20	M20	M16	18	350	800	600	200	500	400	165	400	25	874	18	22