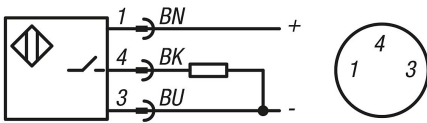
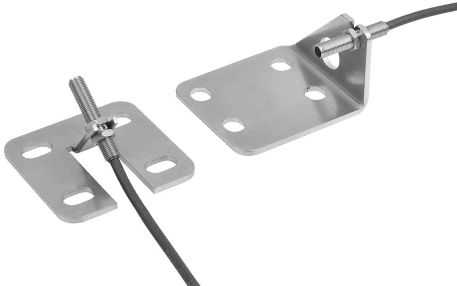


Status sensors, stainless steel with bracket for toggle clamps

Item description/product images



Description

Product description:

Status sensors with brackets are used to monitor the actuated status of toggle clamps. The sensor detects whether the toggle clamp is open or closed and enables this status information to be processed electronically. The sensor is attached to the toggle clamp via the bracket.

Material:

Stainless steel

Version:

Bright.

Note:

The status sensor and brackets are supplied unassembled.

Technical data:

Inductive sensor:
 Output circuit: PNP NO
 Operating voltage: 10 - 30 V DC
 Operating current: 100 mA
 Contact gap: 0.8 mm
 Switch frequency: 5000 Hz
 Short-circuit proof: yes
 Reverse polarity protection: yes
 Rating: IP 67
 Connection type: 0.3 m cable, PUR with plug
 Temperature range: -25 °C - +70 °C
 Approvals: CE, c UL us, EAC

Assembly:

The status sensor is fastened to the bracket with the nuts and set to dimension L1. The bracket is attached with the toggle clamp screws through holes between the foot and the mounting surface. The switch point fine-tuning is carried out once the toggle clamp is mounted. The detailed procedure is described in the assembly instructions.

Accessory:

K0660
 K0662
 K1278
 K1737

Safety:

Status sensors are not suitable for protecting people.

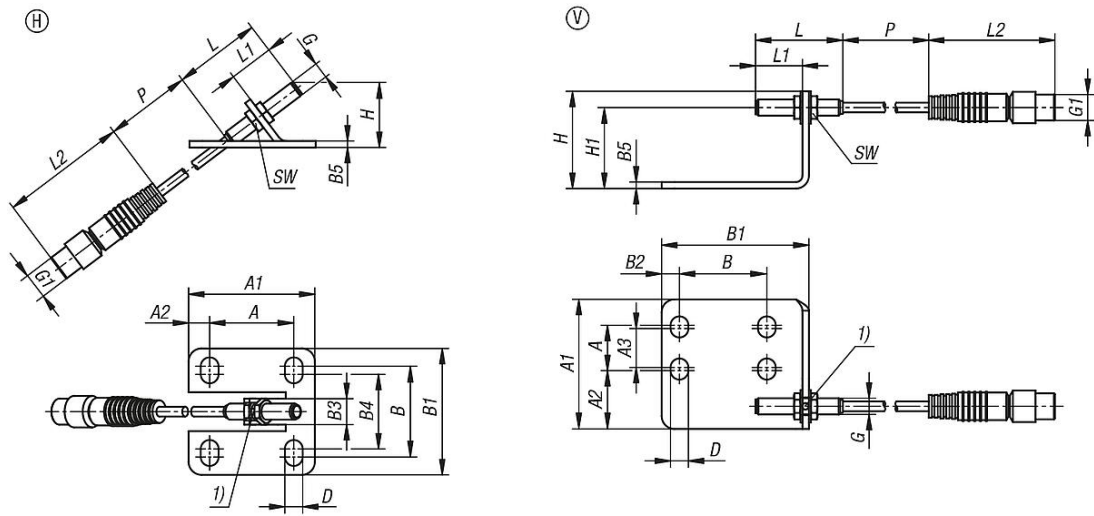
Drawing reference:

1) LED-indicator

BN = brown
 BK = black
 BU = blue

Status sensors, stainless steel with bracket for toggle clamps

Drawings



Overview of items

Status sensors, stainless steel with bracket for toggle clamps

Order No.	Form	Form definition	A	A1	A2	A3	B	B1	B2	B3	B4	B5	D	G	G1	H	H1	L	L1	L2	P	SW	for toggle clamp	M=Spindle toggle clamp
K1736.06111	H	for horizontal toggle clamps	26	39	6,5	-	28	39	-	8	23	2	5,5	M5X0,5	M8x1	20,1	-	27	13,8	39	300	7	K0660	M6x35
K1736.08111	H	for horizontal toggle clamps	26	44	9	-	31	45	-	8	24	2	6,2	M5X0,5	M8x1	27,3	-	27	20,6	39	300	7	K0660	M8x45
K1736.06121	V	for vertical toggle clamps	14	40	18	12	27	45,5	5,5	-	-	2	5,5	M5X0,5	M8x1	30	25	27	14,5	39	300	7	K0662	M6x35
K1736.08121	V	for vertical toggle clamps	21	45	15	19	32	49	6,5	-	-	2	6,8	M5X0,5	M8x1	30	25	27	14,5	39	300	7	K0662	M8x45