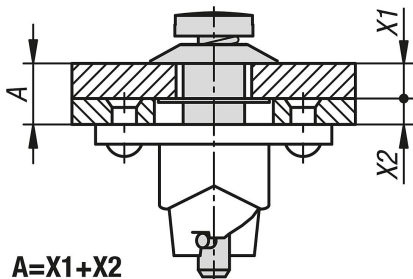


Quarter turn latches, with star grip

Item description/product images



Description

Material:

Steel.

Version:

Electro zinc-plated.

Note:

Quarter-turn latches for securely holding and locking hatches, container lids, machine covers and similar. The lock is closed or opened by turning it through 90°. This moves the cross pin in the locking bolt through a curve in the bottom part of the lock, thus tensioning the spring. At the end point of the curve there is a little recess in which the cross pin engages. The pretensioning force generated in the lock by the spring ensures that the connection is held securely despite any vibrations.

All components in the locking system (locking bolt, retaining washer and bottom part) are captive components which are joined to the cover or the frame.

They are operated toollessly using a star grip.

The quarter turn latch always consists of a 1/4 turn lock, retaining washer and lock bottom part.

Technical data:

Maximum tractive force 1300 N.

Assembly:

A hole of 8 mm is drilled through the cover, the bolt with cross pin are pushed through and secured to the retaining washer from the rear. A 13 mm centre hole is drilled in the frame, with two mounting holes which depend on the hole pattern in the bottom part.

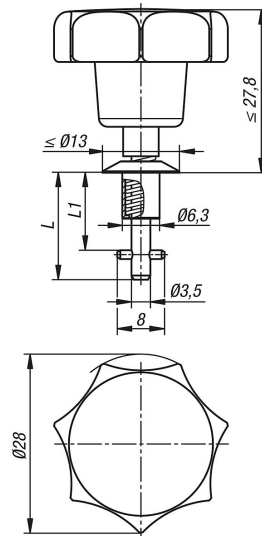
Accessory:

Retaining washers K1731.

Lock bottom part K1732.

Quarter turn latches, with star grip

Drawings



Overview of items

Order No.	A	L	L1
K1730.411315	0,75 - 1,50	18,15	13,15
K1730.411390	1,50 - 2,25	18,15	13,9
K1730.411465	2,25 - 3,00	18,15	14,65
K1730.411540	3,00 - 3,75	20,4	15,4
K1730.411615	3,75 - 4,50	20,4	16,15
K1730.411690	4,50 - 5,25	20,4	16,9
K1730.411765	5,25 - 6,00	22,65	17,65
K1730.411840	6,00 - 6,75	22,65	18,4
K1730.411915	6,75 - 7,50	22,65	19,15
K1730.411990	7,50 - 8,25	24,9	19,9
K1730.412065	8,25 - 9,00	24,9	20,65
K1730.412140	9,00 - 9,75	24,9	21,4
K1730.412215	9,75 - 10,50	27,15	22,15
K1730.412290	10,50 - 11,25	27,15	22,9
K1730.412365	11,25 - 12,00	27,15	23,65
K1730.412440	12,00 - 12,75	29,4	24,4
K1730.412515	12,75 - 13,50	29,4	25,15
K1730.412590	13,50 - 14,25	29,4	25,9
K1730.412665	14,25 - 15,00	31,65	26,65
K1730.412740	15,00 - 15,75	31,65	27,4
K1730.412815	15,75 - 16,50	31,65	28,15
K1730.412890	16,50 - 17,25	33,9	28,9
K1730.412965	17,25 - 18,00	33,9	29,65
K1730.413040	18,00 - 18,75	33,9	30,4
K1730.413115	18,75 - 19,50	36,15	31,15
K1730.413190	19,50 - 20,25	36,15	31,9
K1730.413265	20,25 - 21	36,15	32,65